

Diving List

Local Island & Krabi Island

Number of Dive Sites : 60

Max depth : 18 meters

Visibility : 10m. – 15m.

Temperature : 28-29 C

Opportunity to Experience with : Nudibranchs, Turtle, Barracuda, Grouper, Sea Horse, Black Tip Reef Shark, Leopard Shark, Sea Snake, Soft and Hard coral

Diving Picture:



Shark Point

Number of Dive Sites: 3

Max depth : 30 meters

Visibility : 10m. – 15m.

Temperature : 27-29 C

Opportunity to Experience with : Big Schools of Snapper, Fusilier and Barracudas, Turtle, Grouper, Leopard Shark, Sea Snake, Ghost Pipe Fish, Lion Fish, Scorpion Fish, Soft Coral

Diving Picture : Shark Point



King Cruiser Wreck Dive

Number of Dive Sites: 1

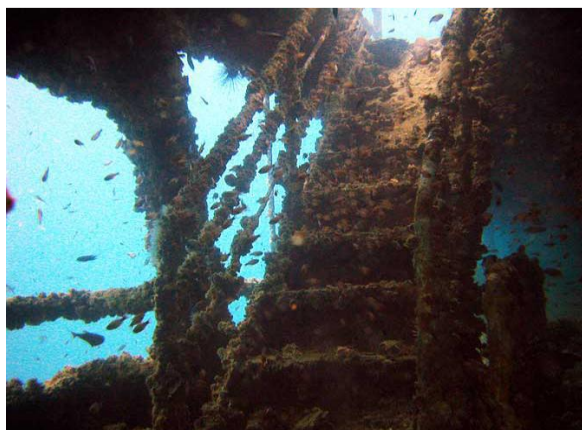
Max depth : 30 meters>>

Visibility : 10m. – 15m.

Temperature : 27-29 C

Opportunity to Experience with : Grouper, Crabs, Turtles, Scorpion Fish, Rabbit Fish, Lion Fish, Porcupine Fish, Eel and Snapper

Diving Picture : King Cruiser



Phi Phi Island

Number of Dive Sites : 60

Max depth : 30 meters

Visibility : 20m. – 30m.

Temperature : 28 - 30 C

Opportunity to Experience with : Grouper, Crabs, Turtles, Scorpion Fish, Rabbit Fish, Lion Fish, Porcupine Fish, Eel, Snapper and Black tip reef shark

Diving Picture : Phi Phi Island



Diving Price List

1. Share Diving Trip (minimum 4 pax)

- Local Island	THB 4,600 per person
- Krabi, Thalu Island	THB 5,200 per person
- Shark Point or King Cruiser	THB 6,200 per person
- Phi Phi Island	THB 7,200 per person

2. Private Trip by Longtail Boat

- Local Island	THB 15,000 per couple
- Krabi, Thalu Island	THB 17,000 per couple
- Shark Point or King Cruiser	THB 20,000 per couple
- Phi Phi Island	THB 25,000 per couple

3. Private Trip by Speed boat

- Local Island	THB 18,000 per couple
- Krabi, Thalu Island	THB 20,000 per couple
- Shark Point or King Cruiser	THB 24,000 per couple
- Phi Phi Island	THB 28,000 per couple

PADI Dive Course

- Open Water Diver	THB 16,700 per person
- Advance Open Water	THB 14,300 per person
- Rescue diver	THB 14,300 per person
- Adventure diver	THB 10,200 per person
- Scuba Diver	THB 10,200 per person
- Emergency First Response (EFR)	THB 6,000 per person
- Discover Scuba Diving (DSD for Beginner)	THB 5,400 per person
- Personal Dive Master	On request

Include: 2 dives, Diving Instructor or Master, Full set of diving equipment, National Park fee, Lunch box and Drinking water