



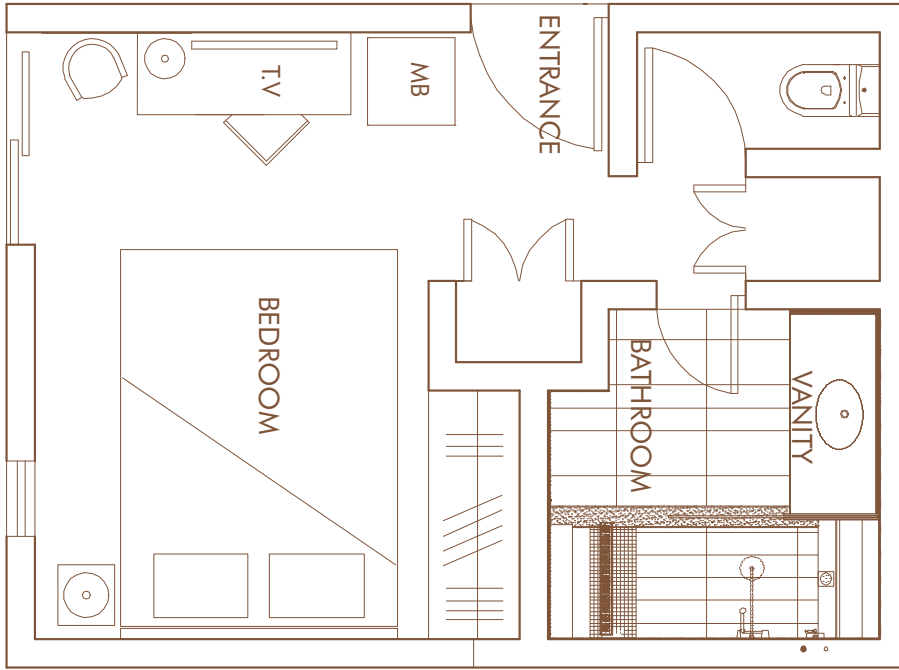
297 rooms nestled between the coral-reef lagoon
and lush tropical gardens,
including Ambre Suites and Deluxe Family Suites.

Room amenities: 32" LCD flat screen TVs | Complimentary WI-FI | Individually controlled air conditioning | Electronic room safes | Tea and coffee making facilities | Bathroom amenities | Slippers | Telephone | Mini bar | Hair-dryer | Electric sockets

| ROOM TYPE | INVENTORY | NO. OF ADULTS | M ² |
|--|-----------|---------------|----------------|
| COURTYARD ROOM | 26 | 2 | 17 |
| SUPERIOR GARDEN ROOM | 48 | 3 | 30 |
| SUPERIOR SEA-FACING ROOM | 26 | 3 | 30 |
| DELUXE SEA-FACING ROOM | 66 | 3 | 42 |
| DELUXE SEA-FACING ROOM - TERRACE / BALCONY | 91 | 3 | 42 |
| DELUXE BEACH ROOM | 21 | 3 | 42 |
| DELUXE FAMILY SUITE | 17 | 4 | 72 |
| AMBRE SUITE | 2 | 3 | 80 |

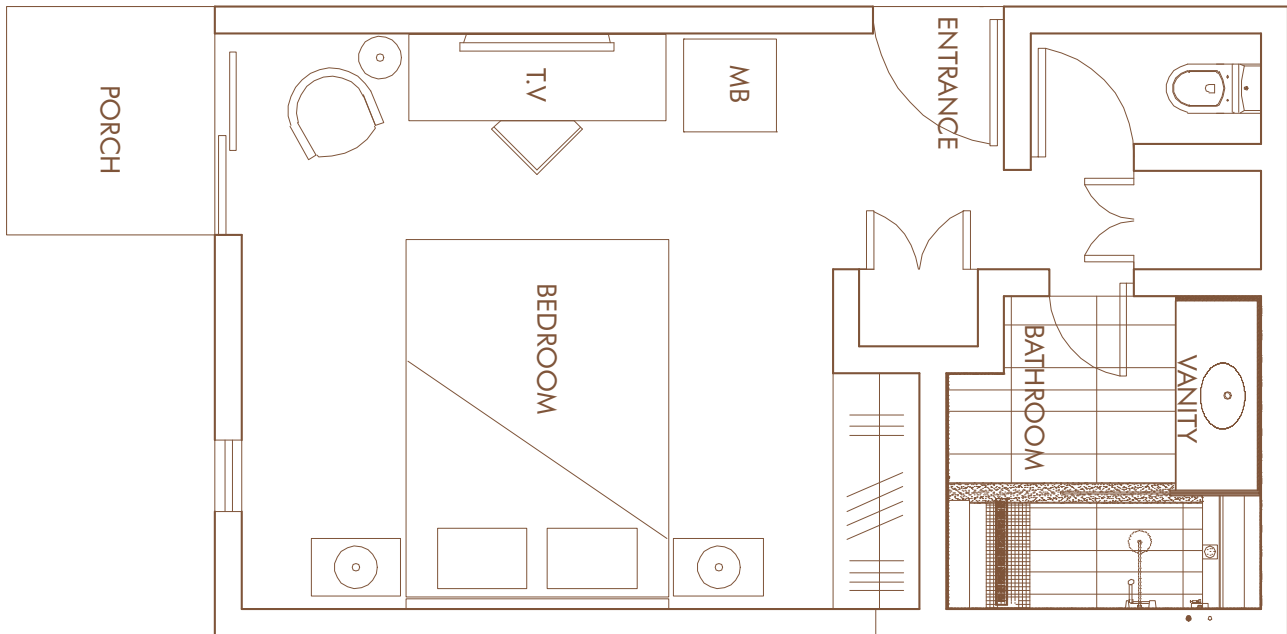
COURTYARD ROOM - 17M²

Twin or King size beds



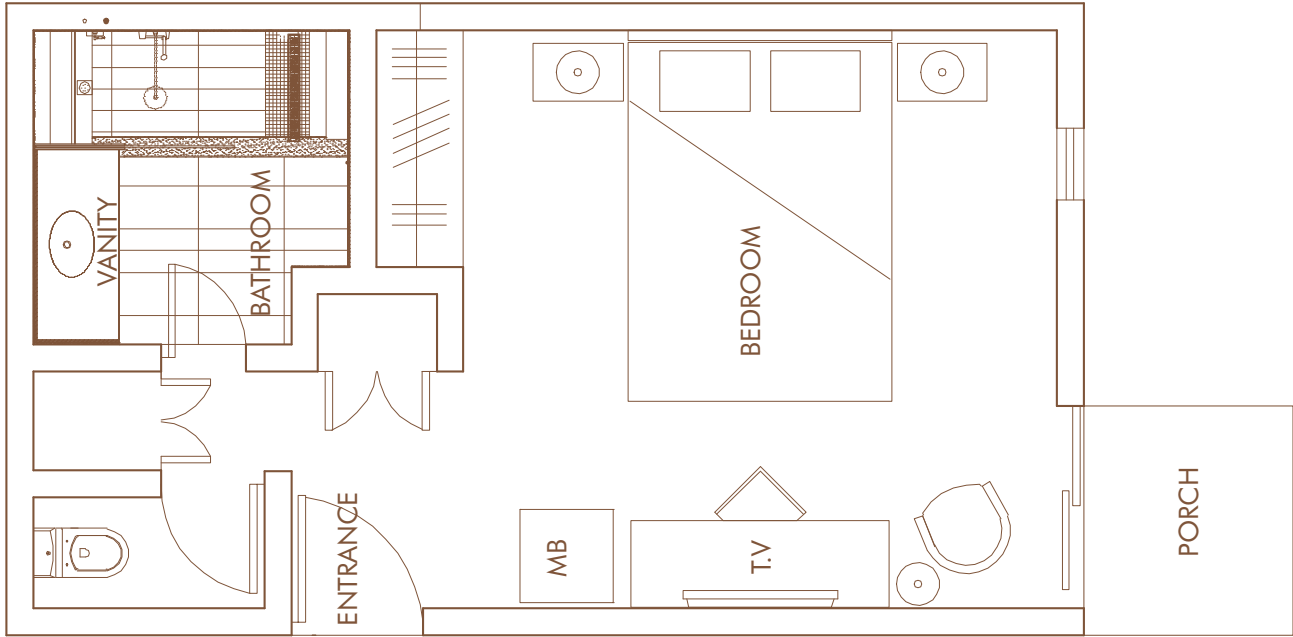
SUPERIOR GARDEN ROOM - 30M²

King size beds



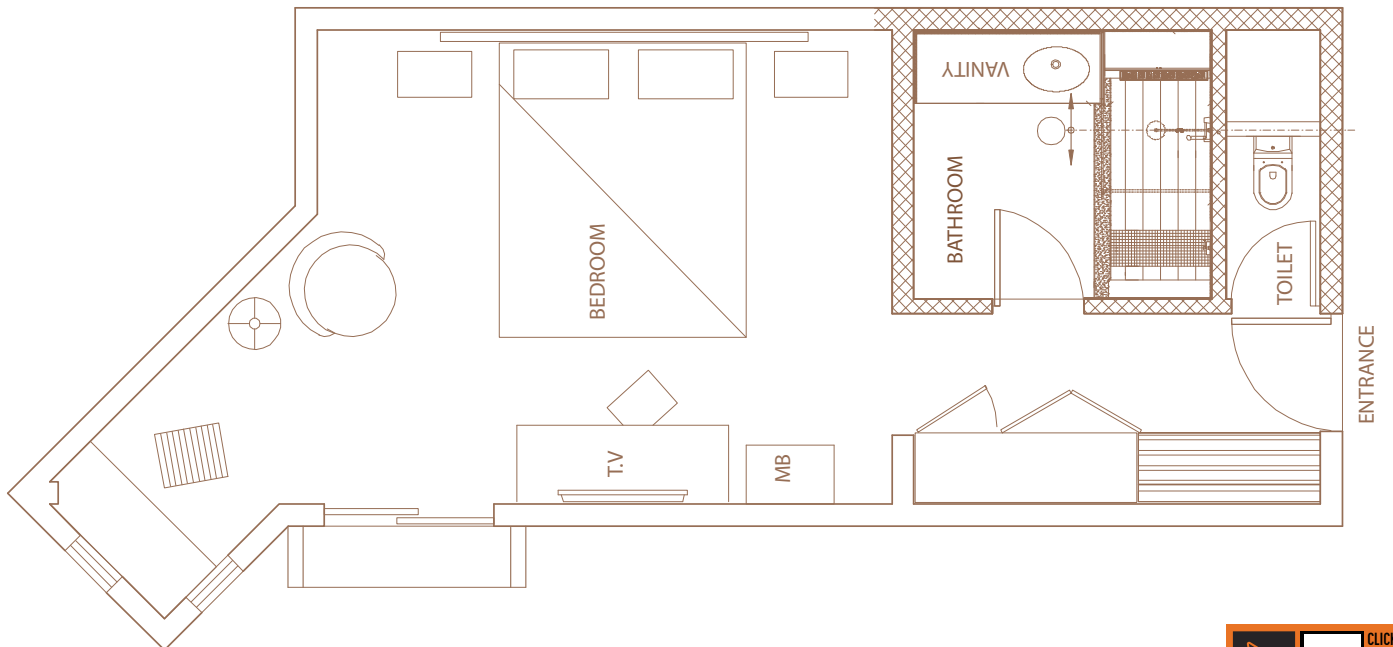
SUPERIOR SEA-FACING ROOM - 30M²

King size beds



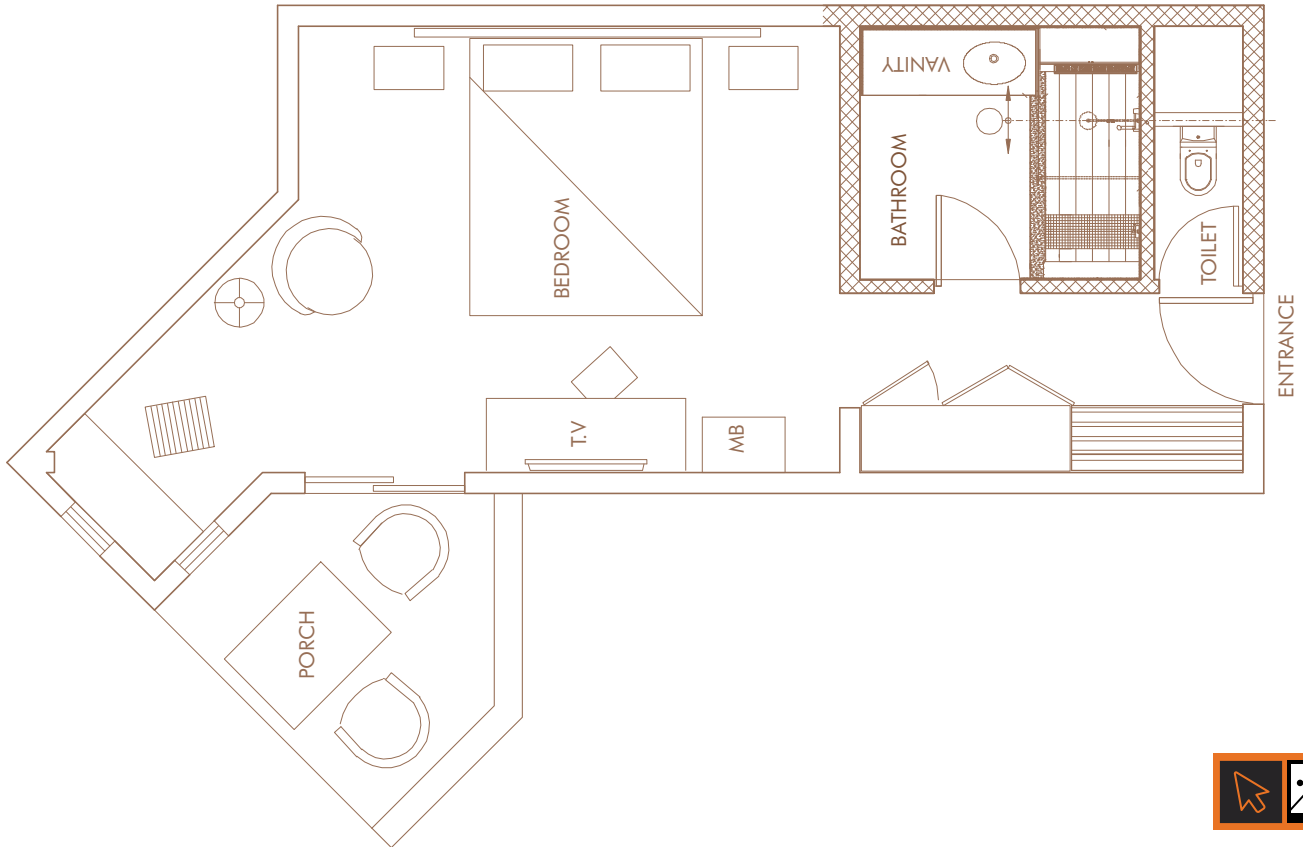
DELUXE SEA-FACING ROOM - 42M²

Twin or King size beds



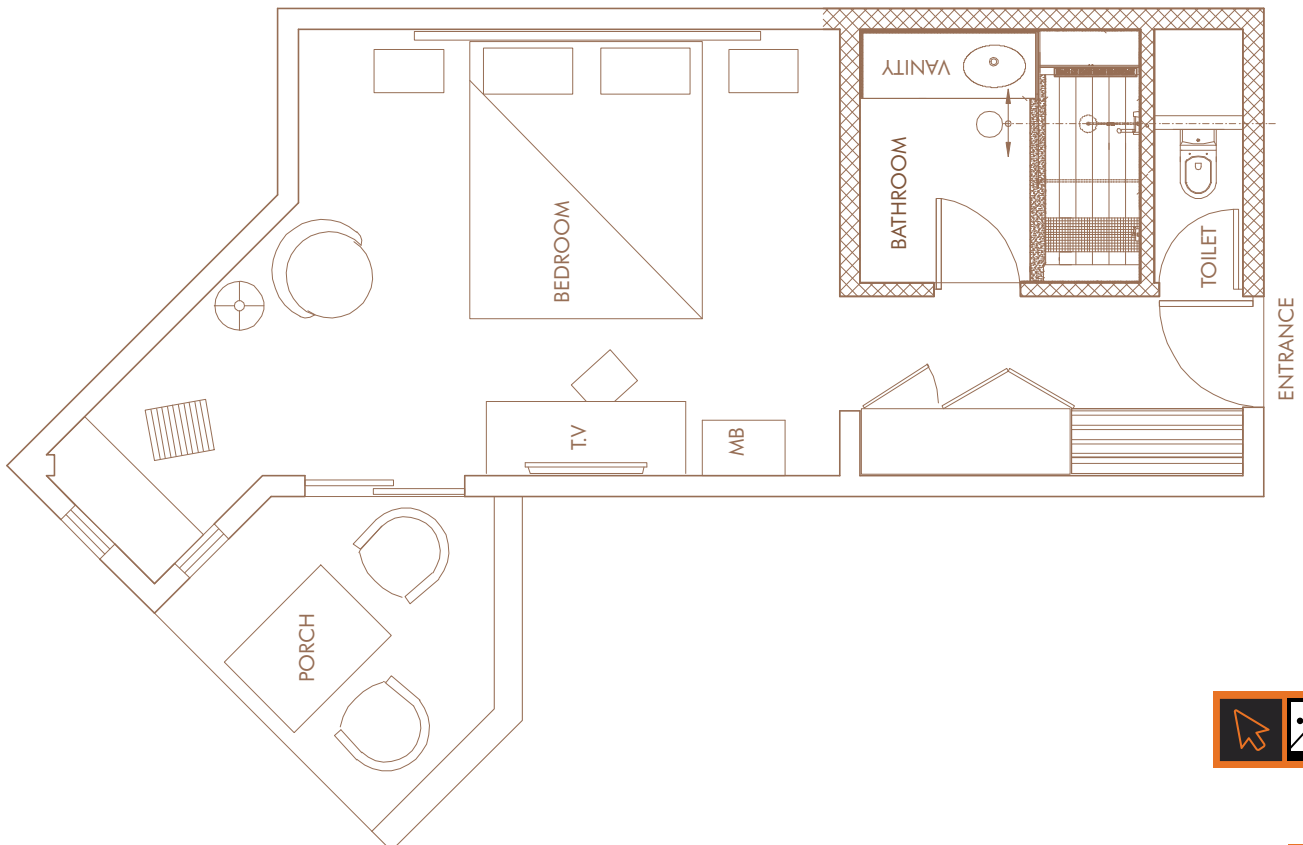
DELUXE SEA-FACING ROOM - TERRACE / BALCONY - 42M²

Twin or King size beds



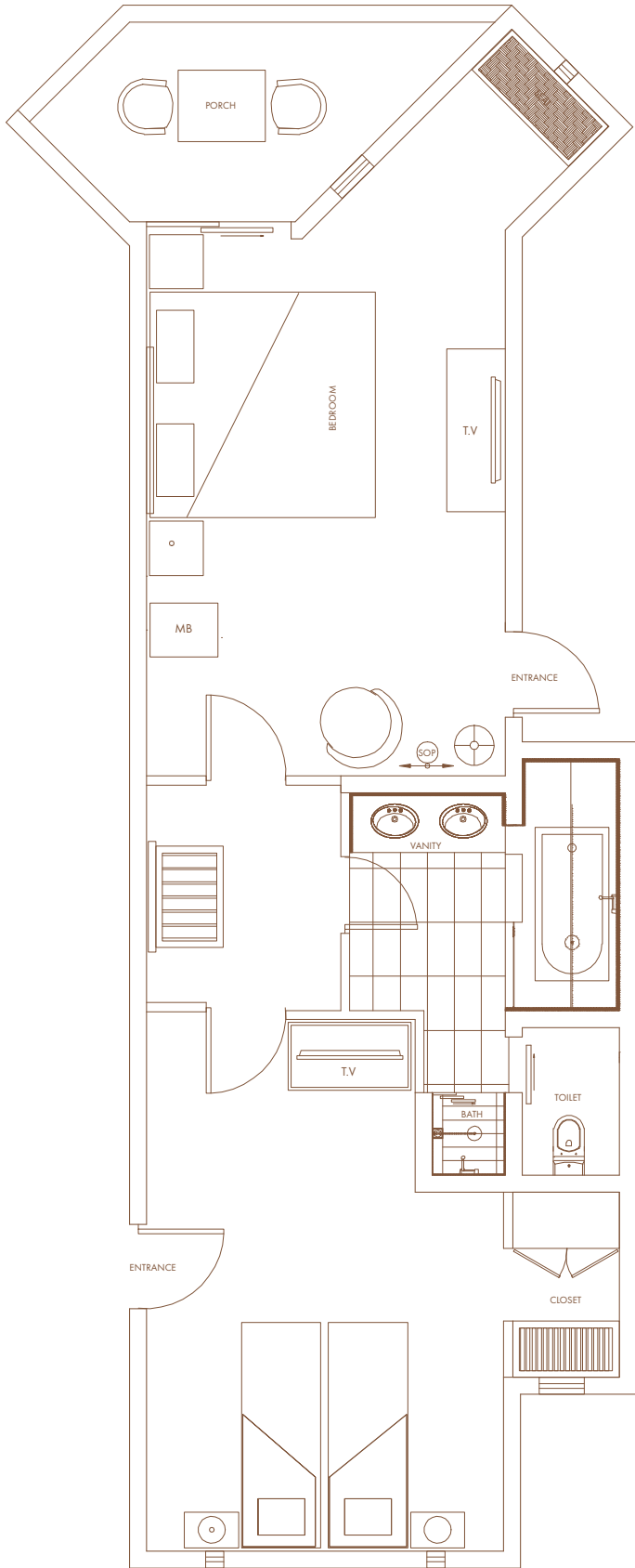
DELUXE BEACH ROOM - 42M²

Twin or King size beds



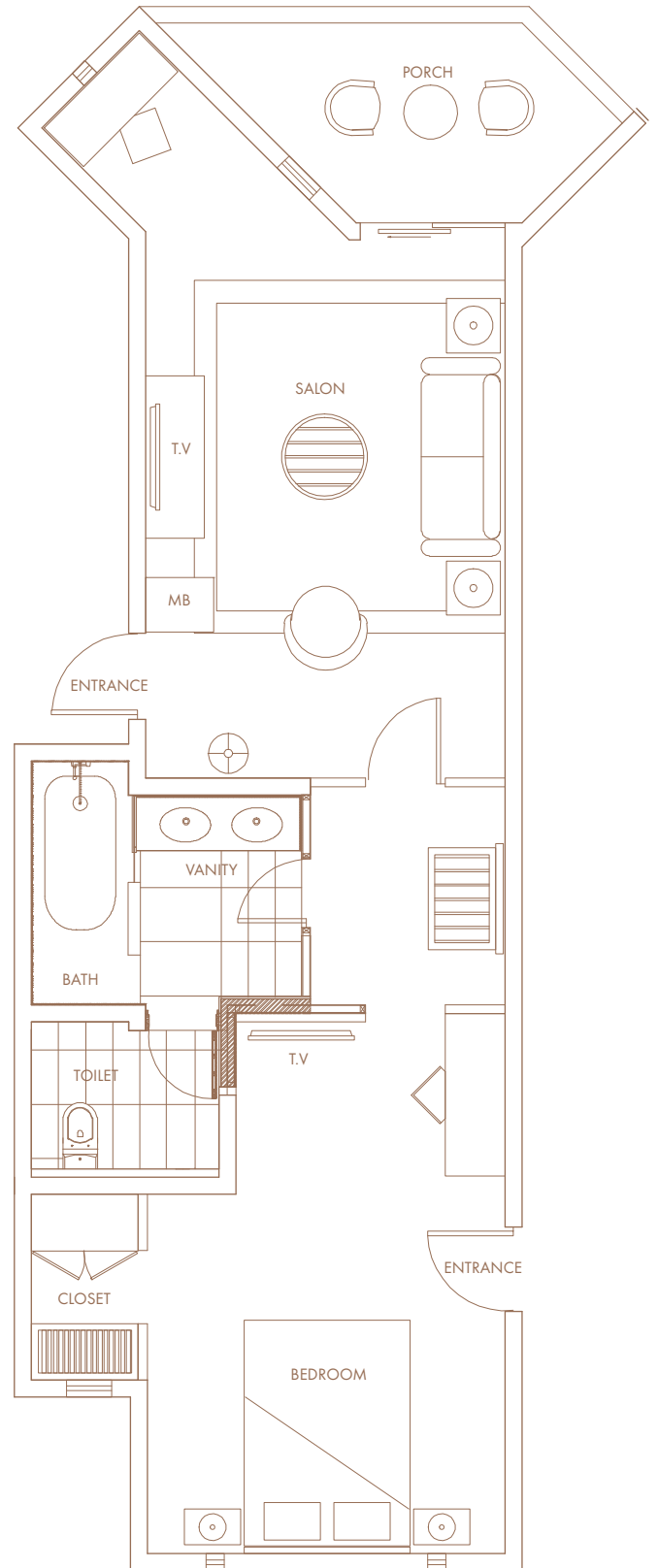
DELUXE FAMILY SUITE - 72M²

Twin or King size beds



AMBRE SUITE - 80M²

King size beds



RESORT LAYOUT



- 1 Main Entrance
- 2 Lobby
- 3 Reception
- 4 Boutique
- 5 H&H Lounge & Shakers Nightclub
- 6 Conference Room
- 7 Ambre Hospitality Lounge
- 8 Medical Room
- 9 Parking
- 10 Fitness Centre
- 11 Bicycle Shed
- 12 Dolce Vita Restaurant
- 13 Lap Pool
- 14 Main Pool
- 15 Indigo Restaurant
- 16 Coral Bar
- 17 La Plage Restaurant
- 18 Towel Kiosk
- 19 TI-Bar
- 20 Water Sports Centre
- 21 Beach
- 22 Tennis Courts
- 23 Outdoor Massage Kiosk
- 24 Spa
- 25 Palmar Conference Centre

| ROOMS | |
|-----------|---|
| BLOCK | SOUTH WING |
| 800 - 837 | COURTYARD ROOM TERRACE/BALCONY (18) SUPERIOR SEA FACING ROOM TERRACE/BALCONY (18) |
| 700 - 717 | COURTYARD ROOM TERRACE/BALCONY (8) SUPERIOR SEA FACING ROOM TERRACE/BALCONY (18) |
| 100 - 191 | DELUXE SEA VIEW (38) DELUXE SEA VIEW ROOM TERRACE/BALCONY(40) DELUXE FAMILY SUITE TERRACE/BALCONY (10) AMBRE SUITE BALCONY (1) |
| BLOCK | NORTH WING |
| 200-260 | DELUXE SEA VIEW (28) DELUXE SEA VIEW ROOM TERRACE/BALCONY(11) DELUXE FAMILY SUITE TERRACE/BALCONY (7) AMBRE SUITE BALCONY (1) |
| 300-316 | SUPERIOR GARDEN ROOM TERRACE/BALCONY (8) DELUXE SEA VIEW ROOM TERRACE/BALCONY (1) DELUXE BEACH ROOM (7) |
| 400-416 | SUPERIOR GARDEN ROOM TERRACE/BALCONY (8) DELUXE BEACH ROOM (1) DELUXE SEA VIEW ROOM TERRACE/BALCONY (7) |
| 500-548 | SUPERIOR GARDEN ROOM TERRACE/BALCONY (24) DELUXE SEA VIEW ROOM TERRACE/BALCONY (24) |
| 600-616 | SUPERIOR GARDEN ROOM TERRACE/BALCONY (8) DELUXE SEA VIEW ROOM TERRACE/BALCONY (8) |

| ROOM CATEGORIES | QUANTITY | IN BLOCK |
|---------------------------------------|----------|-----------------------------------|
| COURTYARD ROOM | 26 | 700 / 800 |
| SUPERIOR GARDEN | 48 | 300 / 400 / 500 / 600 |
| SUPERIOR SEA-FACING | 26 | 700 / 800 |
| DELUXE SEA-FACING | 66 | 100 / 200 |
| DELUXE SEA-FACING TERRACE/ BALCONY | 91 | 100 / 200 / 300 / 400 / 500 / 600 |
| DELUXE BEACH ROOM | 21 | 200 / 300 / 400 |
| DELUXE FAMILY SUITE | 17 | 100 - 191 / 200-260 |
| AMBRE SUITE | 2 | 175 / 225 |