

SIX SENSES
RESIDENCES

COURCHEVEL

PENTHOUSE C16



Balcony

MOUNTAIN LIVING, AT NEW HEIGHTS.

PENTHOUSE C16

Hidden gem among the Alps, designed in the spirit of a French chalet! Located on the fifth and sixth floors, this impressive Five-Bedroom Duplex brings to life the characteristically traditional mountain lifestyle but also the pinnacle of sophisticated living among the French Alps. Exquisite highlights include a fireplace conveniently centered in the living room area, a cinema room as well as spectacular mountain views across the Valley, rooftops, and to the inner courtyard. This marvelous Residence was thoughtfully designed for thoughtful experiences and embodies grand living areas to optimize comfort that makes it a superlative setting for high-end experiences.



KEY FACTS

- Balcony with views to Valley and inner Courtyard
- Located on the fifth and sixth floor
- Alpine inspired living areas
- Epitome of luxury among the French Alps
- Direct access to Six Senses Spa
- Fireplace
- A dedicated cinema room
- Two suites with bathrooms upstairs, each with separate access
- A convenient laundry room

AMENITIES

- Naturalmat organic mattresses (handmade)
 - Pillow menu (à la carte)
 - “Luxe” Welcome Pack
 - Daily Private Breakfast: 1 private chef (fixed menu, *additional items will generate extra cost)
 - 600 EUR Six Senses Spa Credit (Spa treatments only)
 - Daily Turndown Service and Residential Housekeeping Service
 - Personalized check-in in the comfort of the Residence
 - One entitled GEM (Guest Experience Maker) available during specific hours
 - Ski concierge with Tailor-made ski-in/ski-out service at the Ski lifts in Courchevel 1850
 - Fully equipped kitchen (kitchenware, oven, dishwasher, microwave)
 - 24/7 Gym Access (cardio and fitness area)
 - Complimentary shuttle in 1850 to the m (8.30 am to 9:30 pm)
-





Bedroom 1



Bathroom



Bedroom 2



Balcony

3D VIRTUAL TOUR

[Click to view](#)

FLOOR PLAN

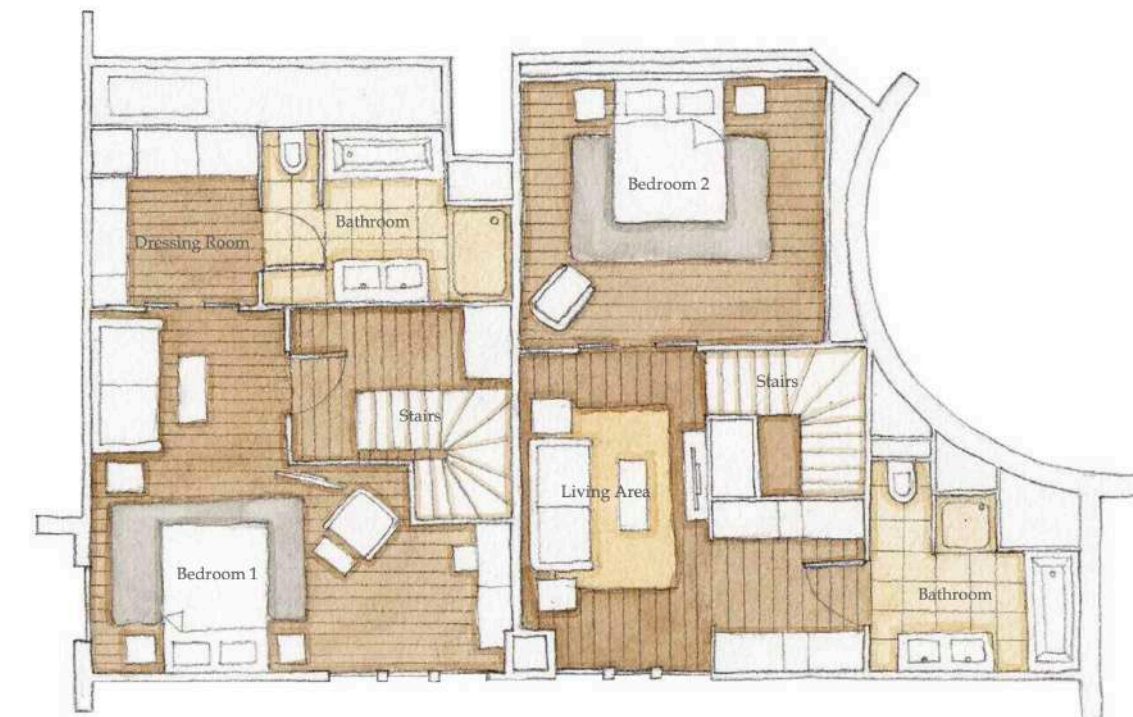
- Habitable Area : 251,40 m²
- Balcony (Total): 18,50 m²
- Floor Level: 5th & 6th
- Living/Dining Area: 64,26 m²
- Cinema Room: 20,45 m²
- Bedroom 1: 19,55 m²
- Bathroom 1: 6,13 m²
- Bedroom 2: 13,35 m²
- Bathroom 2: 5,62 m²
- Bedroom 3: 20,81 m²
- Bathroom 3: 7,69 m²
- Bedroom 4: 17,78 m²
- Bathroom 4: 4,25 m²
- Bedroom 5: 14,31 m²
- Bathroom 5: 3,80 m²



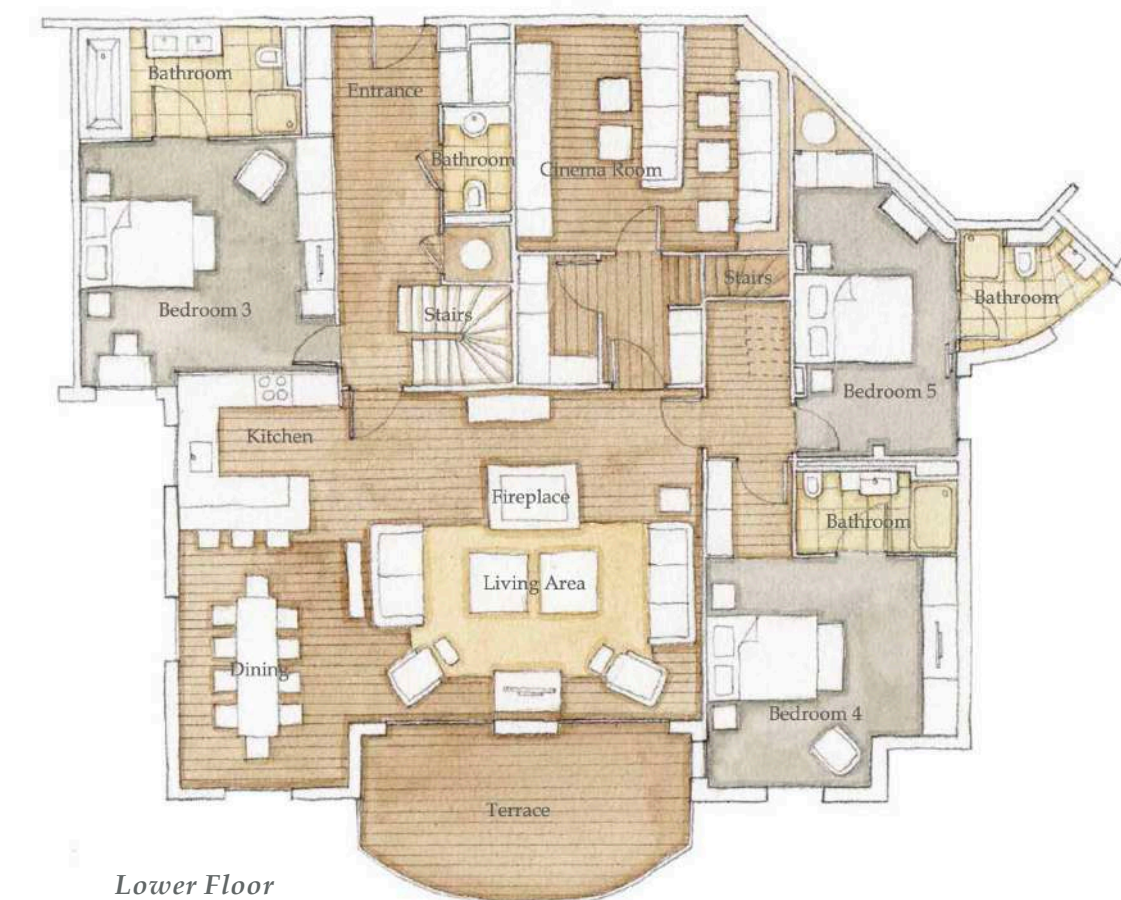
Balcony View



Fireplace



Upper Floor



Lower Floor